



Social Mobility and Intergenerational Poverty: A Structural Problem

Being poor means a lived reality defined by stigma, marginalisation, disadvantage, prejudice and structural inequality. Author Owen Jones writes in his influential book *Chavs*, "Demonising people at the bottom has been a convenient way of justifying an unequal society throughout the ages...At the root of the demonisation of working-class people is the legacy of a very British class war...Social problems like poverty and unemployment were once understood as injustices that sprang from flaws within capitalism...yet today they have become understood as the consequences of personal behaviour, individual defects, and even choice."

Our Brief sheds light on intergenerational poverty - the persistence of poverty across generations. Its causes are multifaceted. The Centre for Social Justice have established 5 pathways to poverty: educational failure, unemployment, family breakdown, addiction, and debt. The Joseph Rowntree Foundation reports that 20% of the UK population are battling a combination of these factors, which compound their problems and impact their ability to overcome poverty.

The aftermath of the pandemic and current living-costs crisis has only widened gaps making social mobility even steeper. While hybrid working is welcomed by many of us, existing studies have also linked digital exclusion to deprivation and poverty; and in doing so have indicated that far from being an issue connected solely with individuals' own personal circumstances, motivations or skill levels, digital exclusion is firmly embedded in structural inequality.

Research Insights



Understanding UK Poverty 2023

This Joseph Rowntree Report sets out recent trends in poverty across the UK, how levels of poverty differ between groups of people and regions, and the impact it has on people's lives. These findings can help us to understand the current situation and future prospects for poverty in the UK. Read [here](#).



Digital Exclusion and Poverty in the UK

Digital exclusion is another facet of the deep inequalities which run through the social fabric of the UK. The link between poverty and digital exclusion is clear: if you are poor, you have less chance of being online. Strategies to close the digital divide are required to build a more equitable society. Read [here](#).



The Cycle of Intergenerational Poverty

This British Journal of Photography article shares photographer Craig Easton's project examining the cycle of poverty. Shot over two decades, he followed two generations of the Williams family, let down by the systemic failure of successive governments' social policy. Read [here](#).

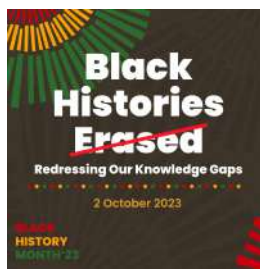
Upcoming Events





**Allyship Unlocked
| 28 September
2023**

We'll be in conversation with Oge Ejizu, Senior DE&I Business Partner at CSG International, to learn more about how their Global DE&I Council leveraged our allyship programme to step into becoming active allies and effective change partners. Register [here](#).



**Black Histories
Amplified |
2 October 2023**

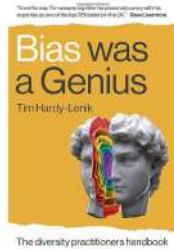
Join us for our Black History Month 2023 as we host our Black History Amplified event to bring you a curated panel on Black histories which have been marginalised, erased, and whitewashed for too long. Register [here](#).



**LGBTQ+
Workplace
Inclusion |
25 October 2023**

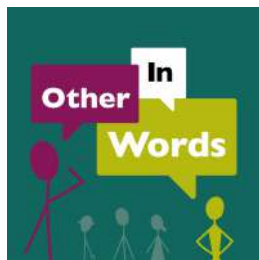
This complimentary webinar invites you to learn more about LGBTQ+ identities and understand the impact that homophobia, biphobia, and transphobia has on our LGBTQ+ siblings and communities both within and outside of the workplace. Register [here](#).

EL Recommends



**Read
Bias Was a Genius: The Diversity
Practitioners Handbook**

So you get the why of DE&I. You may have even started to do the how. But change isn't sticking, and your business is a fair-weather supporter of the work. Our Chief Consulting Officer, Tim Hardy-Lenik, has this handbook for building sustainable, commercially relevant DEI strategies. Preorder [here](#).



**Listen
Poverty, Structural Inequalities, &
the Revolving Door of Crisis and
Crime**

This podcast episode explores the impact of structural disadvantage - the roles, systems and opportunities available to some of us, but not others. Health, race, and poverty feed into the cycle of crime, crisis and chaos. Do those factors stop people from climbing back up? Listen [here](#).



**Watch
Poverty is not an aspiration:
Breaking the poverty cycle**

Poverty remains a significant problem. We blame poverty on the poor rather than recognize that many Americans are born into circumstances where barriers prevent them from breaking the cycle. We need to develop social impact systems to help families become self-sufficient. Watch [here](#).



**Visit
Perilous Journeys: Reflections on
Migration**

This British Museum exhibition offers a compelling display featuring works by contemporary artists from Nigeria and Mexico that reflect on the loss of people and culture through the impact of human trafficking and unsafe migration. Book [here](#).

Meet The Team



Minaxi Mistry
(She|Her)
Founder &
CEO



Tim Hardy-Lenik
(He|She|They)
)
Chief
Consulting
Officer



Sunil Jindal
(He|Him)
Chief Growth
Officer



Ray James
(He|Him)
Advisor



Ian Beckett
(He|Him)
EVP Inclusive
Business
Transformation



Vicky Sleight
(She|They)
EVP Cultural
Transformation



Zehra Odunayo
(She|They)
Client Lead
(UK), DE&I
Consulting



Dylan Shimmon
(He|She)
Learning
Experience
Designer



Apple Cueto
(She|Her)
Global Events
Lead



Alisar Awwad
(She|Her)
Creative
Strategist

Thank you for reading our newsletter.
If you enjoyed it, please do share with colleagues, friends and family.

[Sign up](#)



Equality Leaders © 2023
www.equalityleaders.com

This email was sent to {{contact.EMAIL}}
You've received this email because you've subscribed to our newsletter.

[Unsubscribe](#)